

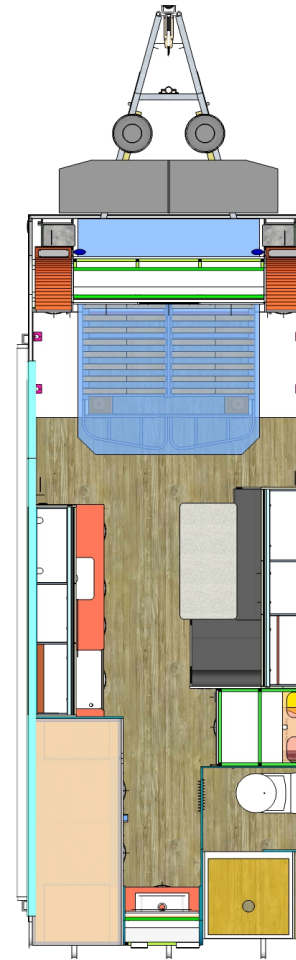
# ZF-20.6\_V ZONE RV Venture Series

2017 TECHNICAL SPECIFICATIONS & UPGRADES

FAMILY

DATE 26/07/17  
FIRST NAME (1)  
SURNAME  
PHONE  
ZONE RV MODEL **ZF-20.6\_V**  
TRAILER PLUG 12 Pin Flat

VERSION 01  
FIRST NAME (2)  
EMAIL



**ZF-20.6\_V ZONE RV Venture Series Specifications**

---

ZV RANGE DIMENSIONS

ZF-20.6\_V

**DIMENSIONS (mm)**

Internal Length	6240
External Travel Length	8100
Internal Width	2290
External Travel Width	2500
Internal Height	1980
External Travel Height	2950

**WEIGHTS (kg)**

Tare Weight	2360
Tare Weight with options	2360
ATM	3300
Ball Weight	165
Ball Weight with options	165

**WARRANTY (Years)**

3

---

**ZF-20.6\_V ZONE RV Venture Series Specifications**

DETAILS	SPECIFICATION	UPGRADE	WEIGHT (KG)	ADD
<b>BODY CONSTRUCTION</b>				
Zone RV's Closed Cell Composite Body	S			
Panelock Bonding Technology	S			
Seamless Front, Roof & Rear Composite Panel	S			
Laser cut alloy and fiberglass fairings and corner protection	S			
<b>FLOOR CONSTRUCTION</b>				
Infused P.E.T One-Piece Composite Floor Panel	S			
<b>CHASSIS</b>				
Light weight RHS Duragal Steel Chassis with laser cut CNC folded members	S			
Hard wearing EPOXY Coating Protective Chassis Shield	S			
Levelling & Stabiliser Legs (x4)	S			
Drawbar mounted side opening tool box	S			
	S			
Bike Carrier on top of tool box	U	\$695	20	
Boat Motor Mount on top of tool box	U	\$1,150	15	
<b>SUSPENSION</b>				
Vehicle Components CRS-Coil Dual Axle 3300kg	S			
Note - AIR BAGS NOT AN AVAILABLE OPTION ON VENTURE				

ZF-20.6\_V ZONE RV Venture Series Specifications

	SPECIFICATION	UPGRADE	WEIGHT (KG)	ADD
<b>BRAKES</b>				
Electric Drum 10" DEXTER Brakes	S			
Upgrade to 12" Brakes - LC stud match available.	U	\$650		
Double Lens Reverse Camera & Vehicle Monitor Kit	U	\$750		
<b>TOWING</b>				
DO-35 Hitchmaster V2 Articulating Hitch	S			
Dexter Electronic Stability Control (ESC)	S			
Break Away System with onboard battery	S			
<b>WHEELS &amp; TYRES</b>				
17" x 7.5" Alloy Wheels	S			
235/65 R17 HT Tyres	S			
Single spare wheel - second not optional	S			
NON STANDARD TYRES:	U			
NON STANDARD WHEELS:	U			
<b>EXTERNAL FEATURES</b>				
Electric Entry Steps	S			
Twin 9.0 kg Gas Bottles & External Gas Bayonet	S			
European Triple Seal Access Hatches	S			
Large Front Boot Storage With Internal Lighting & 12V Power Outlet	S			
Twin LED Awning Lights with Mosquito Deterrent Control	S			
Fold-Down Picnic Table Incorporating External Entertainment Locker & Services	S			
External marine grade speakers	S			

ZF-20.6\_V ZONE RV Venture Series Specifications

	SPECIFICATION	UPGRADE	WEIGHT (KG)	ADD
Fold-Down Picnic Table Incorporating External Entertainment Locker & Services	S			
WEBER BBQ articulating slide in Front Boot Storage Area	U	\$650	10	
ZONE Slide-Out Kitchen, 3 Burner/ sink/ BBQ stand and draws	U	\$2,650	55	
Rear-To-Roof Access Ladder (Folding 10 Step)	U	\$540	10	
Twin Lockable Jerry Can Holders Fitted to Front Storage Box	U	\$300	5	
Extra External LED Lights - Located above tunnel boot	U	\$250	2	
External shower with stow away hose	U	\$345	5	
<b>AWNING</b>				
Dometic Sunchaser Pull-Out Awning - 8300 series	S			
Anti-Flap Kit & Wall Mount Brackets	U	\$450	5	
Twin Awning Centre Tension Rails	U	\$300	3	
Awning arm protection pads	U	\$325	5	
Full Annex (Fitted) including hardware	U	\$2,550	18	
Vertical Sail Tracks for Awning Wall Fitting -	U	\$250	2	
<b>INTERNAL COOLING &amp; HEATING</b>				
Truma Aventa Air Conditioning (Reverse Cycle)	S			
Single Fantastic Roof Vents (Thermostat Control & Pull/Push Air Flow)	S			
Sirocco Wall Mounted 12V Fan	S			
Eberspacher 12V Diesel Air Heater	U	\$2,500	22	
Combo Gas Truma HWS/ Air Heater	U	\$2,200	12	
Additional Fantastic Roof Vent	U	\$595	8	
Additional Sirocco Wall Mounted Fan (Bunk area)	U	\$290	2	

ZF-20.6\_V ZONE RV Venture Series Specifications

	SPECIFICATION	UPGRADE	WEIGHT (KG)	ADD
<b>WINDOWS, ENTRY DOOR &amp; HATCHES</b>				
Dometic CaraD Premium Quad Lock Entry Door	S			
Dometic Sietz S4 Double Glazed Tint Windows	S			
European Triple Sealed External Access Hatch Doors	S			
<b>INTERNAL LAYOUTS</b>				
L Shape lounge in Fabric	S			
Dropaway Table for Seating Bed Area	S			
Complete LED Internal Lighting & Dimmer Controls	S			
Large Door Entry _ with quad locks and security screen	S			
Lounge Area Bed <b>Insert</b> to Convert Seats to Bed LEATHER	U	\$450	5	
<b>CABINETRY</b>				
Zone RV's Unique Timberless Cabinetry	S			
Positive Locking Smooth Pull Latches	S			
Overhead Locker Storage in Kitchen, Living, Over Bed & Ensuite with Twin Gas Strut Assist	S			
<b>KITCHEN</b>				
Top row Kitchen Drawers with cutlery seperator	S			
Swift Gas Oven & Grill, 3 x Gas Burner & 1 x Electric Cooktop	S			
NCE 23L Microwave Mounted in Overheads	S			
Waeco 190L AES (3-Way) Fridge/Freezer	S			
Synthetic Stone Benchtops with Large Workspaces	S			
Large Undermounted Kitchen Sink & Awning Side Served Window	S			

ZF-20.6\_V ZONE RV Venture Series Specifications

	SPECIFICATION	UPGRADE	WEIGHT (KG)	ADD
Change to 190lt Compressor fridge and Off_Road style venting		\$350	15	
<b>BED AREA</b>				
Full Queen Innerspring Bed with Lift-Up Storage Area	S			
Twin Bedside Hanging Wardrobe Storage and Bedside Drawers	S			
Overhead Locker Storage	S			
Padded Upholstered Bed Head	S			
Double bunks with LED reading light and USB charge points	S			
Pillow Top with Memory Foam, Postropedic Mattress Upgrade for main bed	U	\$760	10	
Upgrade bunk mattresses	U			
Add third bunk	U	\$580	10	
<b>ENSUITE</b>				
Moulded Shower Cubicle & Extracting 12V Roof Fan	S			
Dometic Cassette Toilet System (19L Capacity)	S			
Ceramic Vanity Basin With Stylish Mixer	S			
Double Towel Rail	S			
Large Storage in Overhead Cabinets and Under Vanity Drawers and Cupboard Area	S			
	S			
SOG Filter for Toilet System (for no-chemical use and odour elimination)	U	\$495	5	
2kg front load washing machine on wall	U	\$1,350	35	

ZF-20.6\_V ZONE RV Venture Series Specifications

	SPECIFICATION	UPGRADE	WEIGHT (KG)	ADD
<b>POWER</b>				
Single 120 AH AGM Battery Package	S			
20A 240V Charger, 30A DC-DC Charger & Solar Management	S			
100W Flexible Lightweight Solar System (Air-Cooled for Maximum Efficiency)	S			
Trek Battery Monitor (Includes Water Tank Level Indicators)	S			
Full pre-fabricated wiring loom	S			
50A Anderson Plug for Vehicle Charging	S			
Additional 120AH AGM Battery	U	\$420	38	
Enerdrive 200AH Lithium Battery with BT Monitoring (Saves 10kg)	U	\$3,850	-10	
Additional 100W Solar Panel (Roof-Mounted)	U	\$380	10	
2000 W ePRO Inverter - Auto Switch Over at GPO Points	U	\$2,800	12	
2600 W ePRO Inverter - Auto Switch Over at GPO Points	U	\$3,150	16	
Additional External GPO, 12V Power Points	U	\$180	0	
Morningstar TriStar 45a Solar reg - for roaming panel input	U	\$500	5	
<b>H2O</b>				
Fresh Water Storage 100L - Food Grade Poly Water Tank	S			
Grey Water Storage 100L Holding Tank	S			
Gas/240V Truma Gas Hot Water System	S			
Shurflow 12V Water Pump	S			
Internal Isolation Taps for Water Control	S			
Internal Water Level Monitor (Includes Power Monitor Indicators)	S			
Mains Water Pressure System	S			
In-Line Cassette Water Filter	S			
Extra 100L Water Tank & Isolation System for Drinking Water (Separate Shurflow 12V Pump, Water Lines, Cassette Filter and 3-way Tap Upgrade)	U	\$1,295	16	
Additional 100L Fresh Water Tank	U	\$320	12	
Add alloy tank armour to tanks (cost per tank)	U	\$115	5	



ZF-20.6\_V ZONE RV Venture Series Specifications

	SPECIFICATION	UPGRADE	WEIGHT (KG)	ADD
<b>ENTERTAINMENT</b>				
Fusion Black Box Stereo System with Internal/External Speakers (AM/FM, Bluetooth, USB, Auxilery Input Points)	S			
TV/DVD 24" High Definition 12V	S			
Internal and External TV Mounts and Reception/Power Points	S			
Roof-Mounted Jack Digital TV Antenna with Internal Signal Control	S			
Input Point for External TV Reception	S			
VANSAT Bluestar Automatic TV Satellite System Including VAST Decoder	U	\$4,950	25	
Fusion External Stereo Remote	U	\$299	5	
RV-Wifi system (uses 4G pre-paid dongle)	U	\$699	5	
4G Mobile signal boosting system with whip antenna	U	\$1,750	8	

**INTERNAL COLOURS**

Colour Option	BASE CAB Laminate	OVERHEAD Laminate	Flooring	Splashback	Lounge Material
Manhattan	Titanium (M)	Amaro (M)	Grey Brushed Oak 2093	Titan	Manhattan Fabric Layout
Oslo	Marni Lini (M)	White Gloss	Natural Oak 3479	Tusk	Oslo Fabric Layout
Bannockburn	Smoke Shimmer ( White Gloss		HC Wood Grey 3475	Tusk	Bannockburn Fabric Layout
Newport	Smoke Shimmer ( White Gloss		Vintage Oak Grey 3474	Tusk	Newport Fabric Layout
Fabric Upholstery Lounge and Bed-Head				S	
Upgrade to leather lounge				U	\$1,250

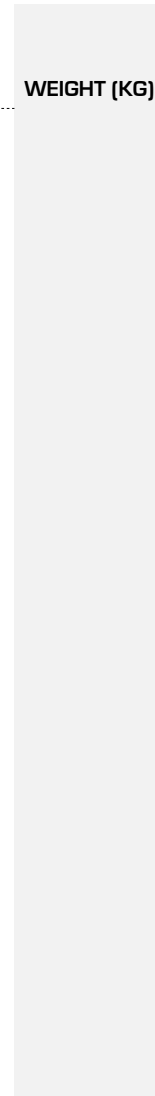
ZF-20.6\_V ZONE RV Venture Series Specifications

NOTES TO ORDER

UPGRADE

WEIGHT (KG)

ADD



**ZF-20.6\_V ZONE RV Venture Series Specifications**

**PRICING**

---

<b>ZF-20.6_V ZONE RV Venture Series Specifications</b>	\$92,900.00
<b>ADDITIONAL UPGRADES</b>	\$0.00
<b>PRICE TOTAL</b>	\$92,900.00

The price indicated on this quote is valid for 30 days from the date generated:

**GET IN THE ZONE**

---

To secure a ZONE RV delivery position on the terms of this quote a \$ 1,000.00 confirmation/holding deposit is required. The holding confirmation deposit will secure a delivery position and the price specified. Final specifications, upgrades and colours are required to be finalised and signed-off 12 weeks prior to the completion date of your caravan. Full details and key dates of manufacturing deposits and delivery dates will be supplied in your ZONE RV Customer Pack.

Once your spec is confirmed ZONE RV works on a progress payment program. The initial investment is required 12weeks prior to delivery. Please talk with our sales team for full terms

**EXPERIENCE ZONE RV**

---

For more information and details regarding the specifications of the ZONE RV caravan range contact one of our expert team on 0754716410 or email sales@zonerv.com.au. We invite our customers the opportunity to experience a walkthrough of the ZONE RV Design & Manufacturing Facility based on the Sunshine Coast, bookings are essential please contact our team to make an appointment.

**CONFIRMATION**

---

**Customer Sign Off**

To confirm the order and lock-in the optional extras please sign & date this form. Please Note: During production of your caravan there will be no changes or adjustments accepted, please review this form carefully before sign-off.

Signed

Date