

# ZONE RV OFF ROAD CARAVAN QUOTE

2016 TECHNICAL SPECIFICATIONS & UPGRADES

## ZF-22.6 FAMILY ZONE

DATE

VERSION

FIRST NAME (1)

FIRST NAME (2)

SURNAME

PHONE

EMAIL

ZONE RV MODEL

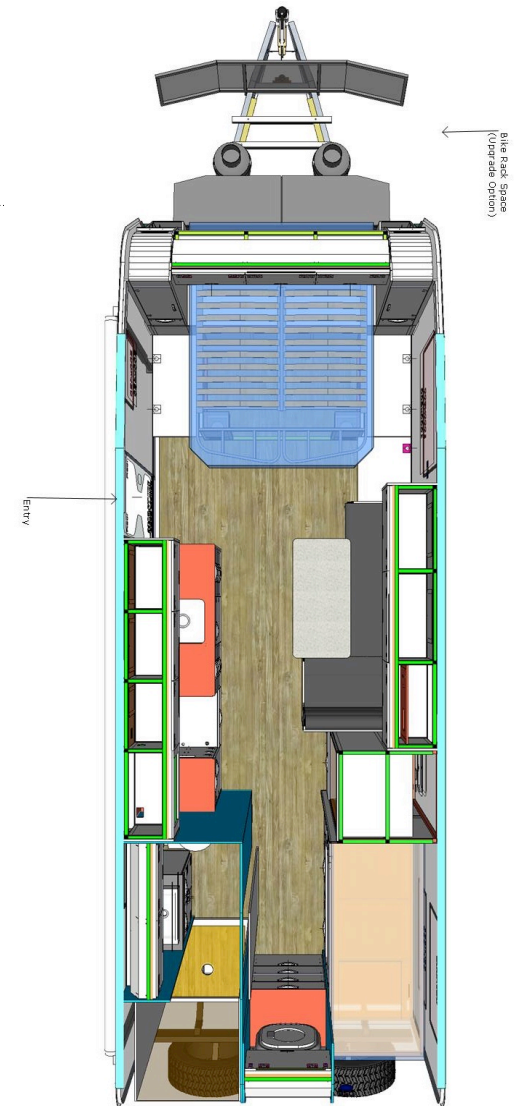
TRAILER PLUG

GET IN THE  
**ZONE**

---

## ZONE RV OFF ROAD TECHNICAL SPECIFICATIONS

	<b>Z-22.6</b>
<b>DIMENSIONS (mm)</b>	
Internal Length	6,880
External Travel Length	9,250
Internal Width	2,290
External Travel Width	2,400
Internal Height	1,980
External Travel Height	3,100
<b>WEIGHTS (kg)</b>	
Tare Weight	2,645
Tare Weight with inclusions	2,645
ATM	3,500
Ball Weight	185
<b>WARRANTY (Years)</b>	
Manufacturers Warranty	3
Structural Warranty (Chassis and Body)	5



## ZONE RV \_ UPGRADES & SPECIFICATIONS

DETAILS	SPECIFICATION	UPGRADE	ADD
<b>BODY CONSTRUCTION</b>			
Zone RV's Closed Cell Composite Body	S		
Panelock Bonding Technology	S		
Seamless Front, Roof & Rear Composite Panel	S		
Raptor-Coat Protective Shield	S		
<b>FLOOR CONSTRUCTION</b>			
Infused P.E.T One-Piece Composite Floor Panel	S		
<b>CHASSIS</b>			
RHS Duragal Steel Off Road Chassis with Laser Cut and CNC folded members	S		
Raptor Coating Protective Shield	S		
Off Road Chassis Lift (50mm)	S		
Levelling & Stabilizer Legs (x4)	S		
Draw bar mounted fire wood carrier	U	365	
Drawbar Extension (500 mm Maximum)	U	480	
Drawbar Mounted Thule Bike Carrier & 500 mm Drawbar Extension	U	1,080	
Drawbar Boat Motor Mount & 500 mm Drawbar Extension	U	1,950	
Hot Dipped Galvanising to Chassis	U	1,800	
<b>SUSPENSION</b>			
Vehicle Components XT-Coil Dual Axle	S		
Vehicle Components XT-Air Bag Suspension _ Stage 4 Auto Level Control	U	6,150	
Vehicle Components XT-Air Bag Suspension _ Stage 3 Manual Control	U	4,650	
Vehicle Components ATX Suspension Upgrade	U	1,200	

**ZONE RV \_ UPGRADES & SPECIFICATIONS**

	SPECIFICATION	UPGRADE	ADD
<b>BRAKES</b>			
Electric Drum 12" AL-KO Brakes	S		
Electric/Hydraulic Disk Brakes (Not Compatable with ESC)	U	2,800	
<b>TOWING</b>			
DO-35 Hitchmaster V2 Articulating Hitch	S		
Dexter Electronic Stability Control (ESC) & Brakesafe Break-Away System	S		
Front Protection Stone Guard and Mud Flaps	S		
Double Lens (Wide Angle Travel & Reversing Zoom) Reverse Camera & Vehicle Monitor Kit	S		
<b>WHEELS &amp; TYRES</b>			
Off Road Alloy Wheels _ 16" x 8" & 265/75/16 AT Tyres	S		
Rear Mounted Standard Spare Wheel	S		
Rear Mounted Spare Wheel Carrier only	U	350	
Second Spare Wheel & Mount	U	550	
17" 6X139.7 Variable off-set Ranger ect match	SET OF 5 U	835	
18" LC200 Match with 265/65 R18 A/T	SET OF 5 U	1650	
WHEEL NOTE: STD WHEELS - SPEEDY OUTLAW 16x8" ALLOY			
TYRE NOTE: STD TYRES - FALKEN WILDPEAK 265/75 R16 A/T			
<b>EXTERNAL FEATURES</b>			
Electric Double Entry Steps	S		
Front Storage Tool Box With Generator Slide (for 2KVA Generator)	S		
External Lockable Water Tap	S		
Twin 4.5kg Gas Bottles & External Gas Bayonet	S		
European Triple Seal Access Hatches	S		
Large Front Boot Storage With Internal Lighting & 12V Power Outlet	S		
Twin LED Awning Lights with Mosquito Deterrent Control	S		

## ZONE RV \_ UPGRADES & SPECIFICATIONS

	SPECIFICATION	UPGRADE	ADD
Twin Front Narva Spotlights	S		
Fold-Down Picnic Table Incorporating External Entertainment Locker & Services	S		
WEBBER BBQ articulating slide in Front Boot Storage Area	U	650	
Upgrade to 9kg gas bottles x 2	U	150	
ZONE Slide-Out Kitchen, 3 Burner/ sink/ BBQ stand and draws	U	2,650	
Rear-To-Roof Access Ladder (Folding 10 Step)	U	540	
Twin Lockable Jerry Can Holders Fitted to Front Storage Box	U	300	
Extra External LED Lights - Located above tunnel boot	U	250	
<b>AWNING</b>			
Dometic Sunchaser Pull-Out Awning - 5.800 mm	S		
Drivers Side Sail Track for Off-Side Awning	S		
Anti-Flap Kit & Wall Mount Brackets	U	450	
Twin Awning Centre Tension Rails	U	300	
Awning arm protection pads	U	325	
Full Annexe (Fitted) including hardware	U	2550	
Vertical Sail Tracks for Awning Wall Fitting -	U	250	
<b>INTERNAL COOLING &amp; HEATING</b>			
Truma Aventa Air Conditioning (Reverse Cycle)	S		
Twin Fantastic Roof Vents (Thermostat Control & Pull/Push Air Flow)	S		
Sirocco Wall Mounted 12V Fan	S		
Eberspacher 12V Diesel Air Heater	U	2,500	
Combo Gas Truma HWS/ Air Heater	U	2,200	
Domectic INVERTER Aircon (adds 12kg)	U	0	
Additional Sirocco Wall Mounted Fan	U	290	

**ZONE RV \_ UPGRADES & SPECIFICATIONS**

	SPECIFICATION	UPGRADE	ADD
<b>WINDOWS, ENTRY DOOR &amp; HATCHES</b>			
Dometic CaraD Premium Quad Lock Entry Door	S		
Dometic Sietz S4 Double Glazed Tint Windows	S		
European Triple Sealed External Access Hatch Doors	S		
<b>INTERNAL LAYOUTS</b>			
Large Leather 'L' Shaped Lounge & Entertainment Console	S		
Dropaway Table for Seating Bed Area	S		
Complete LED Internal Lighting & Dimmer Controls	S		
Large Front Door Entry _ with metal crime safe venting	S		
Lounge Area Bed <b>Insert</b> to Convert Seats to Bed LEATHER	U	450	
<b>CABINETRY</b>			
Zone RV's Unique Aluminium/Composite Cabinetry System With sandwich panel updates	S		
Positive Locking Smooth Pull Latches	S		
Self-Closing Stainless Steel Drawer Runners (45kg Rating Each)	S		
Overhead Locker Storage in Kitchen, Living, Over Bed & Ensuite with Twin Gas Strut Assist	S		
	U		
<b>KITCHEN</b>			
Soft Closing Kitchen Storage Drawers with Positive Locking Latches	S		
Swift Gas Oven & Grill, 3 x Gas Burner & 1 x Electric Cooktop	S		
Samsung Microwave Mounted in Overheads	S		
Full Height Pull-Out Double Pantry _ Z-20.6 & Z-21.6 Models (not available in Z-18.6)	S		
Waeco 190L Compressor Fridge/Freezer with Roof Mounted Solar Heat Extraction Fan	S		

**ZONE RV \_ UPGRADES & SPECIFICATIONS**

	SPECIFICATION	UPGRADE	ADD
Fully Dust-Proof Sealed Fridge Venting & Stationary Cooling Hatch	S		
Synthetic Stone Benchtops with Large Workspaces	S		
Large Undermounted Stainless Kitchen Sink & Awning Side Servery Window	S		
Waeco 218L Compressor Fridge/Freezer Upgrade	N/A		
<b>BED AREA</b>			
Full Queen Innerspring Bed with Lift-Up Storage Area	S		
Twin Bedside Hanging Wardrobe Storage and Bedside Drawers	S		
Overhead Locker Storage	S		
Padded Upholstered Bed Head	S		
Double Bunks with LED Lighting and USB Charge Points	S		
Pillow Top with Memory Foam, Postropedic Mattress Upgrade	U	760	
ADD third bunk	U	450	
His and Hers fabric under bed dividers	U	415	
<b>ENSUITE</b>			
Large Internal Shower Cubicle & Extracting 12V Roof Fan	S		
Dometic Cassette Toilet System & SOG Filter (19L Capacity)	S		
Ceramic Vanity Basin With Stylish Mixer	S		
Daweoo 2 kg Front Load Washing Machine with Reinforced Mounting Frame	S		
Double Towel Rail	S		
Large Storage in Overhead Cabinets and Under Vanity Drawers and Cupboard Area	S		
<b>POWER</b>			
Twin 120 AH AGM Battery Package	S		
Enerdrive ePOWER 40A 12V Charging, 30A Enerdrive DC-DC Charger & Solar Management	S		

**ZONE RV \_ UPGRADES & SPECIFICATIONS**

	SPECIFICATION	UPGRADE	ADD
400W Flexible Lightweight Solar System (Air-Cooled for Maximum Efficiency)	S		
Drifter Battery Monitor (Includes Water Tank Level Indicators)	S		
Internal & External 240V, 12V and USB Power Points	S		
50A Anderson Plug for Vehicle Charging	S		
Enerdrive 200AH Lithium Battery with BT monitoring	U	3850	
Enerdrive 300AH Lithium Battery Package	U	6950	
Additional 100W Solar Panel (Roof-Mounted)	U	380	
2000 W ePRO Inverter - Auto Switch Over at GPO Points	U	2800	
2600 W ePRO Inverter - Auto Switch Over at GPO Points	U	3150	
Third 120AH AGM Battery	U	420	
Additional Internal Double GPO, 12V Socket or USB Power Points	U	150	
Additional External GPO, 12V Power Points	U	180	
2KVA Promac Generator Fitted to Generator Slide	U	1260	
Morningstar TriStar 45a Solar reg - for roaming panel	U	415	
<b>H2O</b>			
Fresh Water Storage 200L - Twin 100L Food Grade Poly Aluminium Armoured Water Tanks	S		
Grey Water Storage 100L - 100L Food Grade Poly Aluminium Armoured Water Tank	S		
Gas/240V Truma Gas Hot Water System	S		
Shurflow 12V Water Pump	S		
Internal Isolation Taps for Water Control	S		
Drifter Water Level Monitor (Includes Power Monitor Indicators)	S		
Mains Water Pressure System	S		
In-Line Cassette Water Filter	S		
External Hot/Cold Shower	S		
Water Tank Isolation System for Drinking Water (Separate Shurflow 12V Pump, Water Lines, Cassette Filter and 3-way Tap Upgrade)	U	680	
Additional 100L Fresh Water Tank & Aluminium Tank Armour	U	380	
Creek water pull system from on-board pump	U	450	





**ZONE RV \_ UPGRADES & SPECIFICATIONS**

**NOTES TO ORDER**

**UPGRADE**

## ZONE RV \_ UPGRADES & SPECIFICATIONS

### PRICING

---

ZF-22.6 OFF ROAD	\$119,900.00
ADDITIONAL UPGRADES	\$0.00
<b>PRICE TOTAL</b>	<b>\$119,900.00</b>

The price indicated on this quote is valid for 30 days from the date generated:

### GET IN THE ZONE

---

To secure a ZONE RV delivery position on the terms of this quote a \$ 1,000.00 confirmation/holding deposit is required. The holding confirmation deposit will secure a delivery position and the price specified. Final specifications, upgrades and colours are required to be finalised and signed-off 12 weeks prior to the completion date of your caravan. Full details and key dates of manufacturing deposits and delivery dates will be supplied in your ZONE RV Customer Pack.

### EXPERIENCE ZONE RV

---

For more information and details regarding the specifications of the ZONE RV caravan range contact one of our expert team on 1300 134 446 or email sales@zonerv.com.au. We invite our customers the opportunity to experience a walkthrough of the ZONE RV Design & Manufacturing Facility based on the Sunshine Coast, bookings are essential please contact our team to make an appointment.

### CONFIRMATION

---

#### Customer Sign Off

To confirm the order and lock-in the optional extras please sign & date this form. Please Note: During production of your caravan there will be no changes or adjustments accepted, please review this form carefully before sign-off.

---

Signed

---

Date